

MONTHLY MEMBERSHIP PROGRESS REPORT

District 11 E1

Results as of: 6/30/2024

GMT:

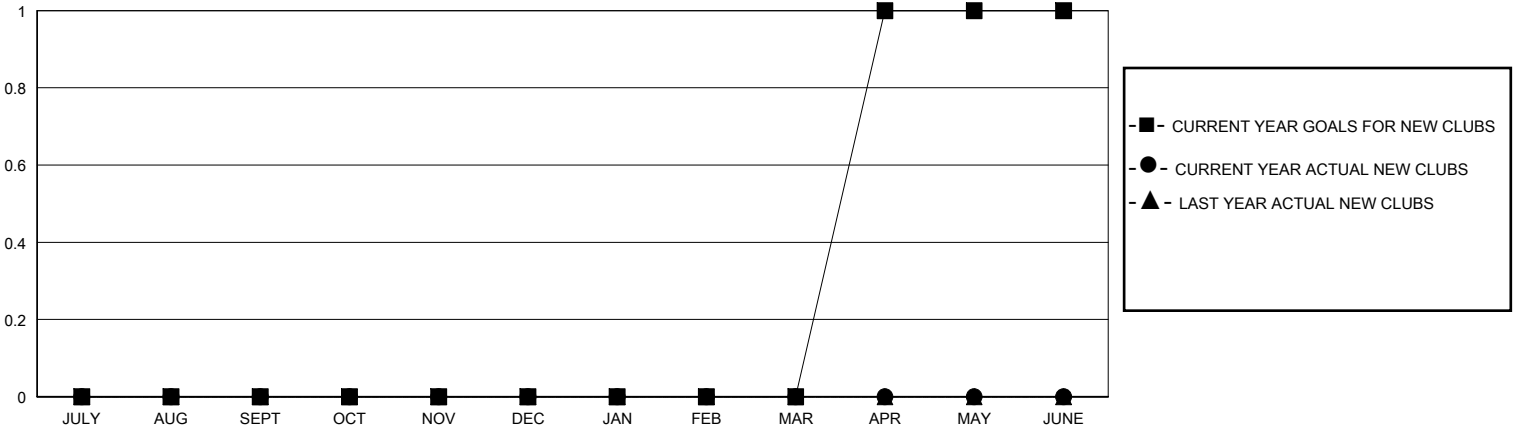
LOCATION MICHIGAN

GMT CA

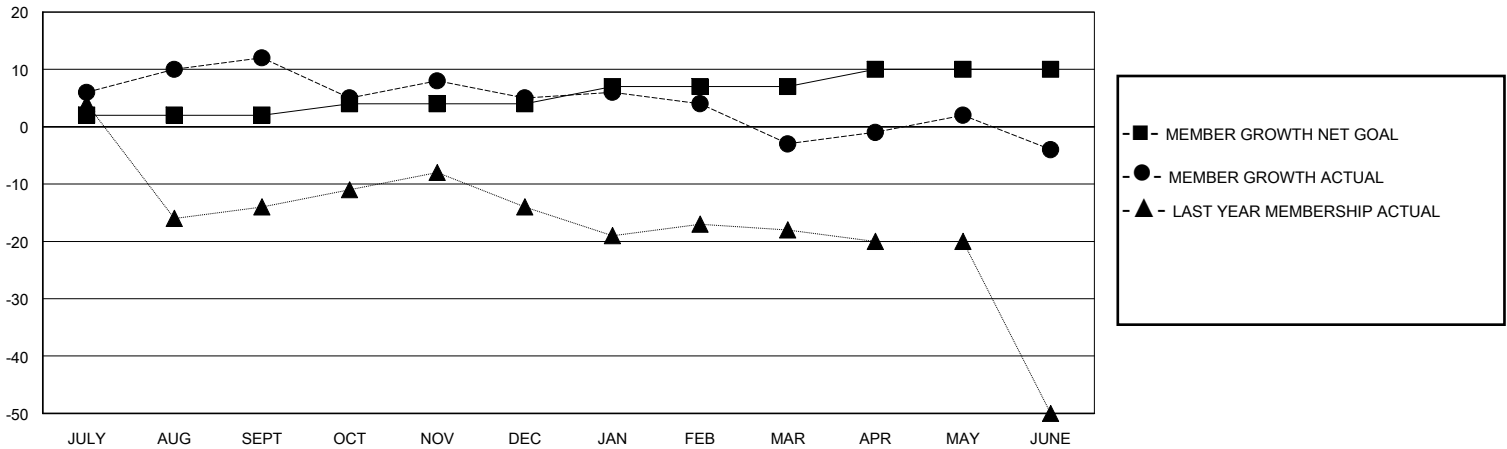
Clubs			
RESULTS FOR 2023-2024			
QUARTER	NEW CLUB GOAL	NEW CLUBS	DROPPED CLUBS
JULY/AUG/SEPT	0	0	0
OCT/NOV/DEC	0	0	0
JAN/FEB/MAR	0	0	0
APR/MAY/JUNE	1	0	0

Members			
RESULTS FOR 2023-2024			
QUARTER	MEMBER GROWTH NET GOAL	MEMBER GROWTH ACTUAL	DROPPED MEMBERS ACTUAL (including transfers)
JULY/AUG/SEPT	2	37	24
OCT/NOV/DEC	2	19	26
JAN/FEB/MAR	3	12	19
APR/MAY/JUNE	3	34	32

GOALS AND ACTUAL NEW CLUBS CUMULATIVE



GOALS AND ACTUAL MEMBERS CUMULATIVE



DROPPED CLUBS: 0	24 CLUBS OF 38 ADDED 1 OR MORE NEW MEMBERS	GENDER DISTRIBUTION MALE 565 (63.27%) FEMALE 326 (36.51%)
DROPPED MEMBERS DECEASED 11 CLUB CANCELLED 0 OTHER 90 TOTAL 101	CLICK HERE FOR CUMULATIVE MEMBERSHIP DATA	TOTAL FAMILY UNIT MEMBERS 263 FAMILY MEMBERS PAYING HALF DUES 134